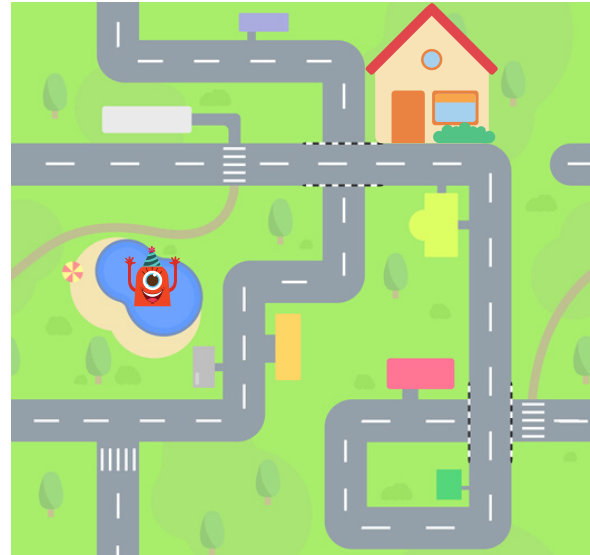


Name: _____

Introduction to Reading a Map

Urban planners are people who design what a town looks like. It is their job to make sure a town has everything it needs, like roads, buildings, and parks.

Sometimes, urban planners add things that are missing in a city! For example, an urban planner might add a swimming pool to a town so kids can swim in the summer. Urban planners need to look at a map to figure out what needs to be added to a city. An urban planner might see that there are not enough fire hydrants. The urban planner can use the map and see where fire hydrants can be added. Take a look at this city to the right. Can you find at least three places where you would add a fire hydrant?



Today, you will be an urban planner and look at a map of a town. Then, you will add things to the map that are missing! Follow the steps below.

Step 1: Learn About Parts of a Map

Learn about three important parts of a map!

Title

The title of a map tells you what is on the map. The title should be specific and give the reader information. The title goes on top of the map. For example, a map of the United States could be titled "50 States in America."

→ 50 States in America



Symbols

Maps use symbols to show different place on a map. A symbol is a small picture that shows where something is located on a map. For example, you might see a picture of a slide as a symbol for a playground. You might also see a picture of a building as a symbol for a school.



Key

The key tells you what the symbols mean. The key is usually under the map or on the side of the map. The key has the symbol and the word that goes with the symbol, like the picture of a slide and the word "playground."

Key



Name: _____

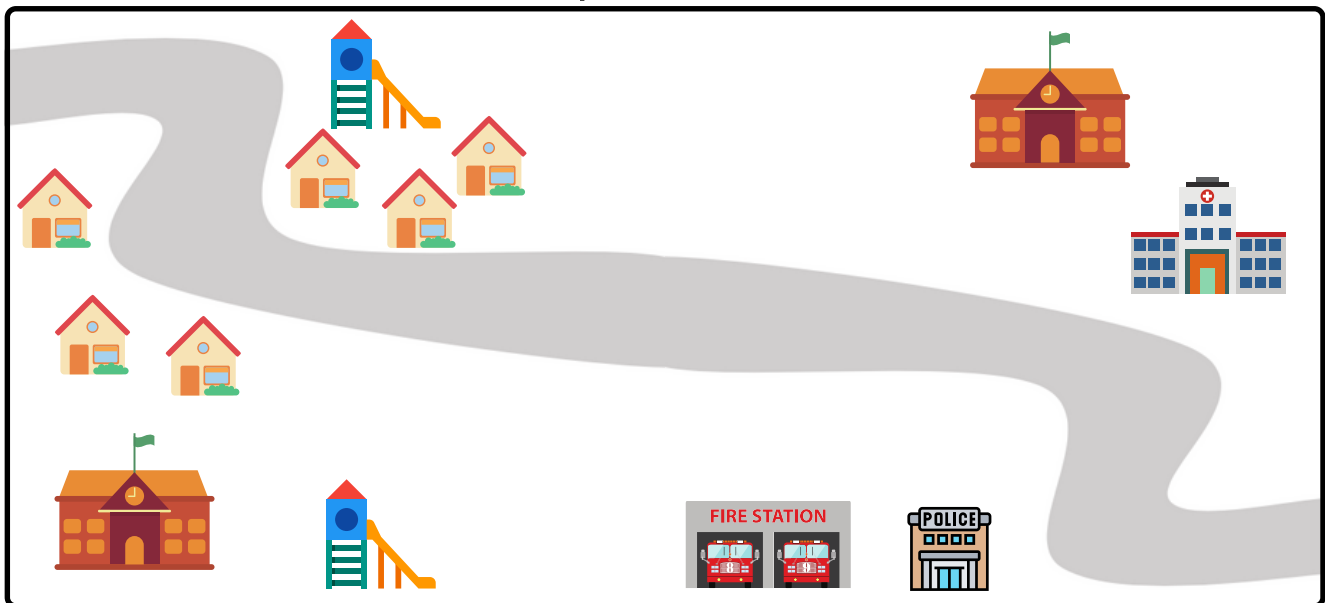
Introduction to Reading a Map

Step 2: Reading a Map

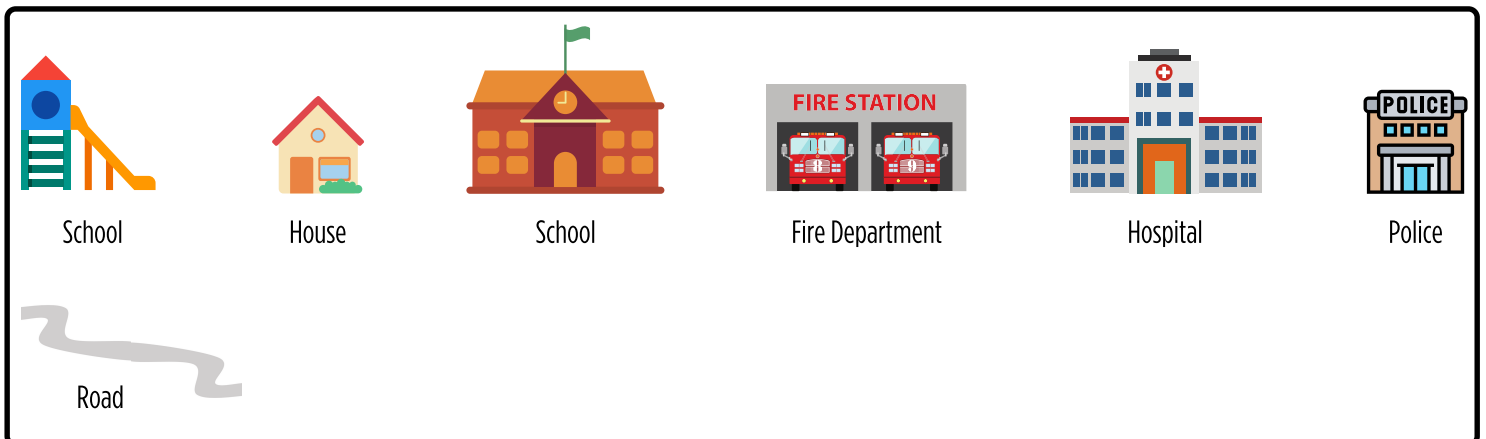
Below is a map of Gordon Town. Complete the steps below to read the map and learn what is in Gordon Town.

1. How many parks are in the neighborhood? _____
2. Draw a circle around the fire department.
3. How many houses are in the neighborhood? _____
4. Draw a car on the road.
5. Draw 2 kids next to one of the schools.
6. Draw a square around the police department.

Map of Gordon Town



Key



Name: _____

Introduction to Reading a Map

Step 3: Add Items to the Map

Now, you will add things to the map that are missing in Gordon Town. Below are a list of 3 items that need to be added to the map of Gordon Town. Read about the item and create a symbol for it. Then, draw the symbol on a map and add it to the map key!

Water Tower

A water tower holds water for a town. The water goes from the water tower to people's sinks and bathtubs!

Draw a symbol for a water tower where you want it on the map. Then, add that symbol to the map key.



Garbage Dump

A garbage dump is where all of the trash goes in a town.

Draw a symbol for a garbage dump where you want it on the map. Then, add that symbol to the map key.



Post Office

A post office is where all of the mail is organized for the city.

Draw a symbol for a post office where you want it on the map. Then, add that symbol to the map key.

