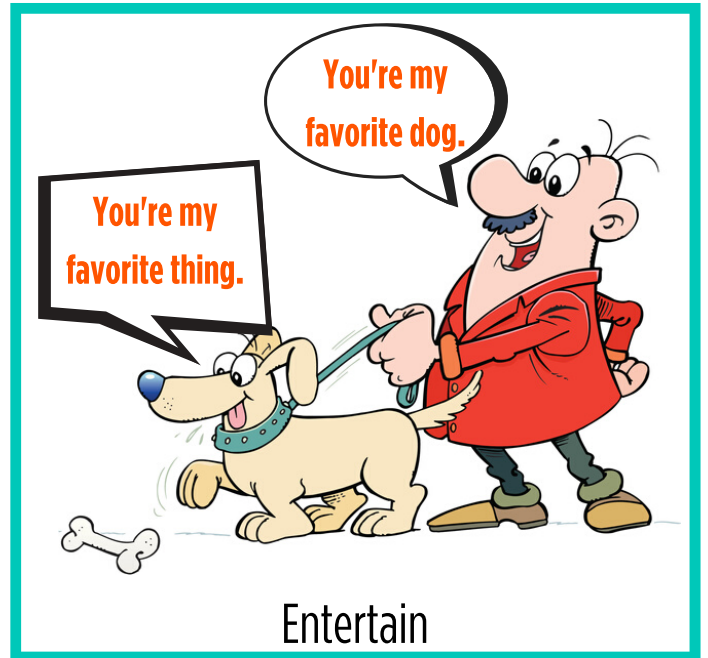
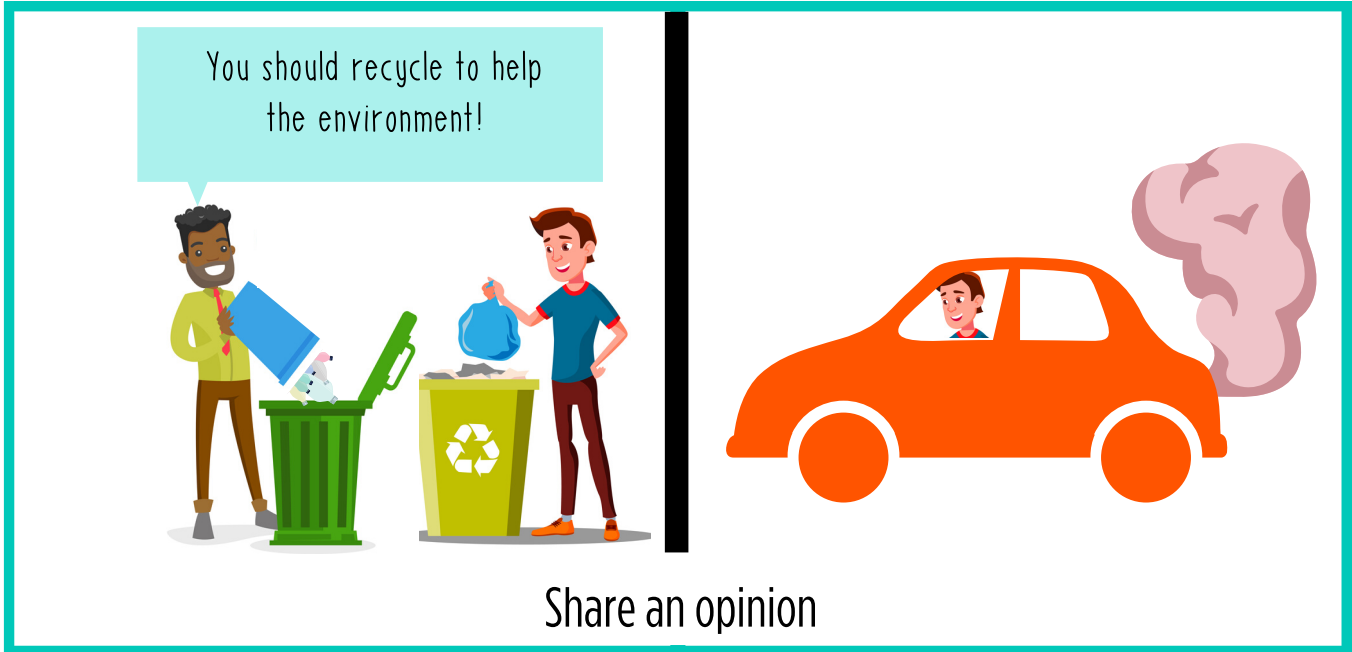


Name: _____

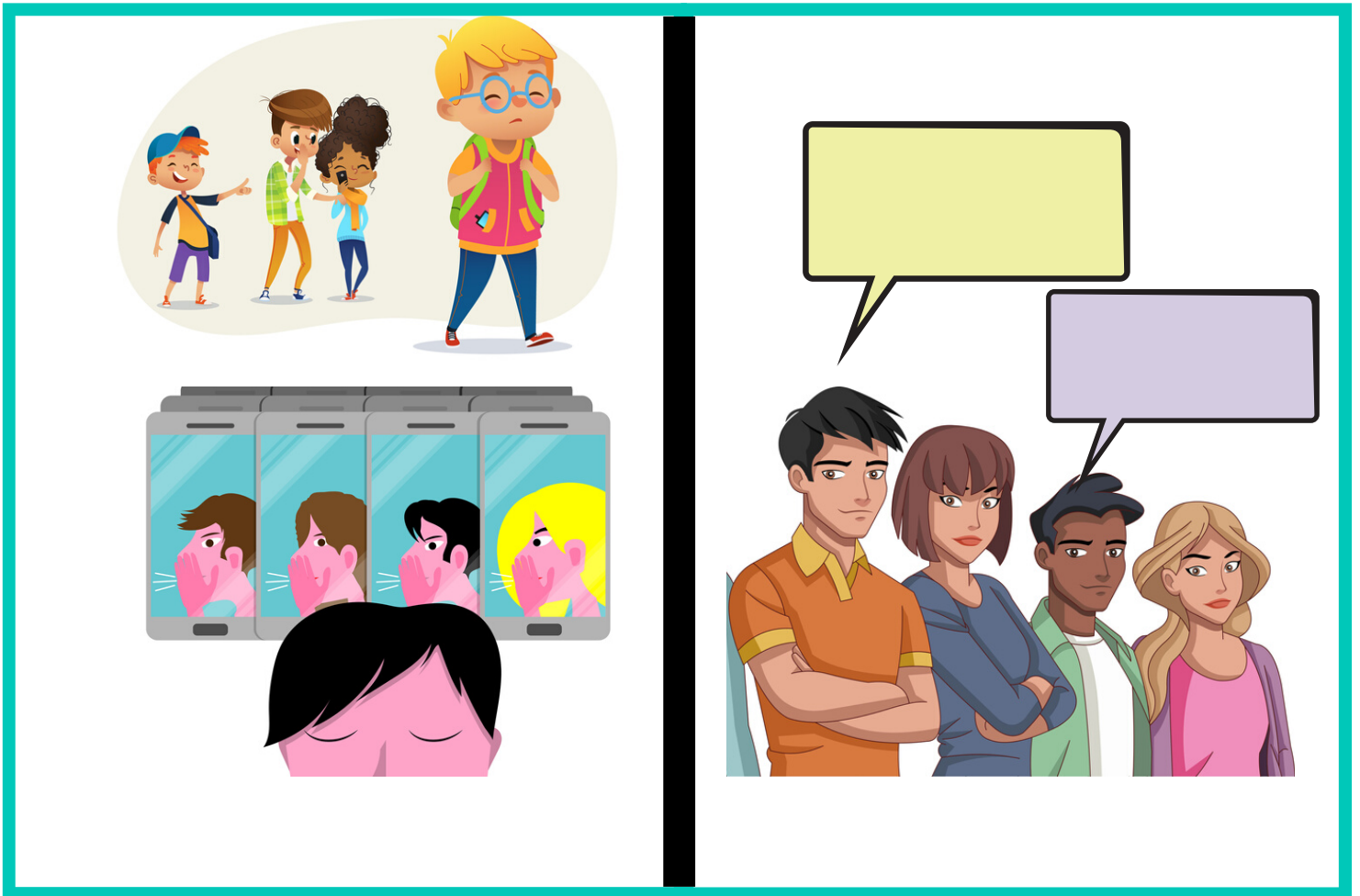
Example Cartoons

Cartoons are used to...



Name: _____

Cartoon 1



Name: _____

Cartoon 2



Using Dialogue in Writing

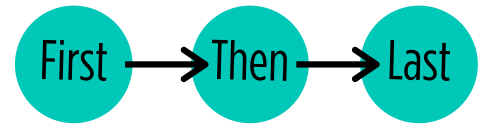
Dialogue is a conversation between two or more characters.



To help the reader learn about characters' personalities



To help the reader learn about characters' likes and dislikes



To help the reader better understand the plot



To show the time or setting of the story



To add drama to the story



To show a character's thoughts and feelings

Name: _____

Steps to Create a Cartoon

Step 1: Plan Your Cartoon

Curiosity in Action is a company that sells toys for ages 5-13. They are releasing a new product line called "Slippery Slime!" There will be four different types of slime that people can buy. You will create a cartoon that talks about one of the new slime products. Fill out the information below to plan your cartoon.

Choose the type of slime you will create a cartoon about. Circle your choice.

Glitter

School-themed

Sports-themed

Animal-themed

Glow-in-the-dark

Choose the purpose for your cartoon. Circle your choice.

Share your opinion about the new slime

Inform readers that there is a sale on the new slime

Persuade readers to buy the new slime

Entertain readers with a fictional story about the new slime

Choose a tone for your cartoon. Circle your choice.

Funny

Serious

Informative

Dramatic

Other _____

Brainstorm ideas for your cartoon below. Your cartoon must have the following:

- At least two characters
- At least four speech bubbles
- Dialogue between characters

Name: _____

Steps to Create a Cartoon

Step 2: Create Cartoon

You will now design your cartoon. Your teacher will give you a handout called “Cartoon Panel.” You will draw your cartoon in the boxes under the dotted line. You will write any dialogue above the dotted line.

Step 3: Analyze Partner Cartoons Without Dialogue

Fold your cartoon on the dotted line so that your partner is unable to see your dialogue. After you and your partner both fold the cartoon and hide the dialogue, trade cartoons. Then, answer the questions below.

1. What do you think the cartoon about?

2. What do you think the purpose of the cartoon is?

3. What do you think is the tone of this cartoon?

4. How do you think the characters feel?

Name: _____

Steps to Create a Cartoon

Step 4: Analyze Partner Cartoons With Dialogue

Unfold your partner's cartoon so that you are able to see the dialogue. Look at the cartoon again and read the dialogue. Then, answer the questions below.

1. After looking at the cartoon with dialogue, did your opinion change about what the purpose of the cartoon is? Explain your answer.

2. After looking at the cartoon with dialogue, did your opinion change about what the tone of the cartoon is? Explain your answer.

3. After looking at the cartoon with dialogue, did your opinion change on how you think the characters feel? Explain your answer.

Name: _____

Cartoon Panels

Create your cartoon in the squares at the bottom of the page. You must use at least four squares but may use more if needed.

Remember: all dialogue must go above the dotted line!

Dialogue

Boxes



Cartoon

Boxes

Name: _____

Creating Your Own Slime

Ingredients

- Bottle of Elmer's Glue (6 ounces)
- Baking soda (1.5 teaspoons)
- Contact solution with Boric Acid or Sodium Borate in the ingredients (1.5 teaspoons)
- Spoon or spatula
- Mixing bowl
- Measurement tools
- Optional: food coloring

Steps

1. Empty entire bottle of glue into a mixing bowl
2. Stir in 1.5 teaspoons of baking soda and mix well with a spoon or spatula.
3. Optional: Add in food coloring and mix with well with a spoon or spatula.
4. Slowly add in 1.5 teaspoons of contact solution until slime forms.
5. Use your hands to knead the slime to get it to a consistency you like.

Hint: If slime is too sticky slowly add more contact solution to the mixture until it is how you would like.