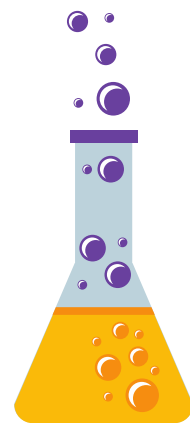


# Lab Rules

- **Do not put anything in your mouth.**
- **Do not touch your eyes.**
- **Keep gloves on while handling chemicals.**
- **Keep pencils and paper away from chemicals.**
- **Wash your hands after clean up.**
- **Listen carefully to your teacher about clean up.**
- **Listen carefully to your teacher if there is a spill.**



# Steps to Create Slime

## Step 1: Weigh ingredients before they are mixed.

- Turn on the scale and make sure it measures zero.
- Place ALL of your materials on the scale: the baggie with the glue, the cup with Borax, and the cup with water.
- Look at the scale and see how much all of the materials weigh together.
- Write down weight of materials!
- Record the weight on [Handout: Ingredients' Mass Table](#).

## Step 2: Weight after some ingredients are mixed.

- Take everything off the scale.
- Pour half of the water into the Borax cup.
- Pour the other half of the water into the baggie with the glue and seal the bag.
- Take turns swirling the cup and mixing the glue with water for about 3-5 minutes.
  - Gently swirl the water in the cup to dissolve the Borax until most of the small particles are gone.
  - Gently mix the glue with the water in the bag until the glue is runny with no clumps.
- Place ALL of your materials on the scale: the bag with glue and water, the cup with dissolved Borax, and the empty water cup.
- Look at the scale to see how much all of these materials weigh.
- Record your observations of what the materials look like and their mass on [Handout: Ingredients' Mass Table](#).

# Steps to Create Slime

## Step 3: Weight after all ingredients are mixed.

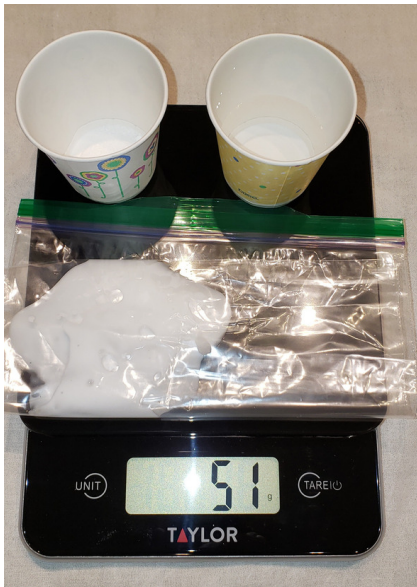
- Take all ingredients off the scale.
- Open the plastic bag with glue and pour in the Borax mixture and the water mixture.
- Seal the bag and gently mix the materials together.
- Make sure all group members take a turn mixing the materials in the bag. Pay attention to what is happening!
- Place ALL of your materials on the scale: the baggie with the glue, Borax, and water mixture and the empty cups from the Borax and the water.
- Record the mass of the ingredients on [Handout: Ingredients' Mass Table](#).

# Ingredients' Mass Table

Step of experiment	Observations of ingredients	Mass of all materials (g)
<b>Step 1: Before mixing ingredients</b>		
<b>Step 2: After some ingredients are mixed</b>		
<b>Step 3: After all ingredients are mixed</b>		

# Slime Scale Set Up

Set up after Step 1:



Set up after Step 2:



Set up after Step 3:

