

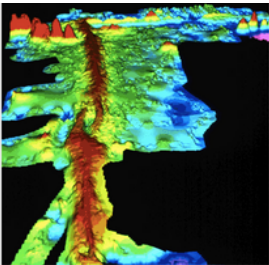
Name: _____

Content Check

1. Why are maps of the Earth's features important? What do scientists look for on these maps?

2. Use the picture in order to answer the following questions.

Part A: What does this map tell us about the ocean floor?



Part B: What would a consequence be if a geoscientist did not map this part of the ocean?

Content Check

Teacher Key

1. Why are maps of the Earth's features important? What do scientists look for on maps?

Answers may vary: Maps are important because they can tell us how we need to travel to get to certain places. They can also help predict natural disasters. Scientists look for patterns on maps to make predictions about the future.

2. Part A: What does this map tell us about the ocean floor?

Answers may vary: This map tells us how deep the water is in addition to the type of land there is on the ocean. It seems like there are mountains in this area from the shape of the landform on the map.

Part B: What would a consequence be if a geoscientist did not map this part of the ocean?

Answers may vary: Not knowing what is under the ocean could cause accidents in the ocean if people try to dive very deep or some natural disasters such as earthquakes, volcanoes, or tsunamis may not be able to be predicted.