



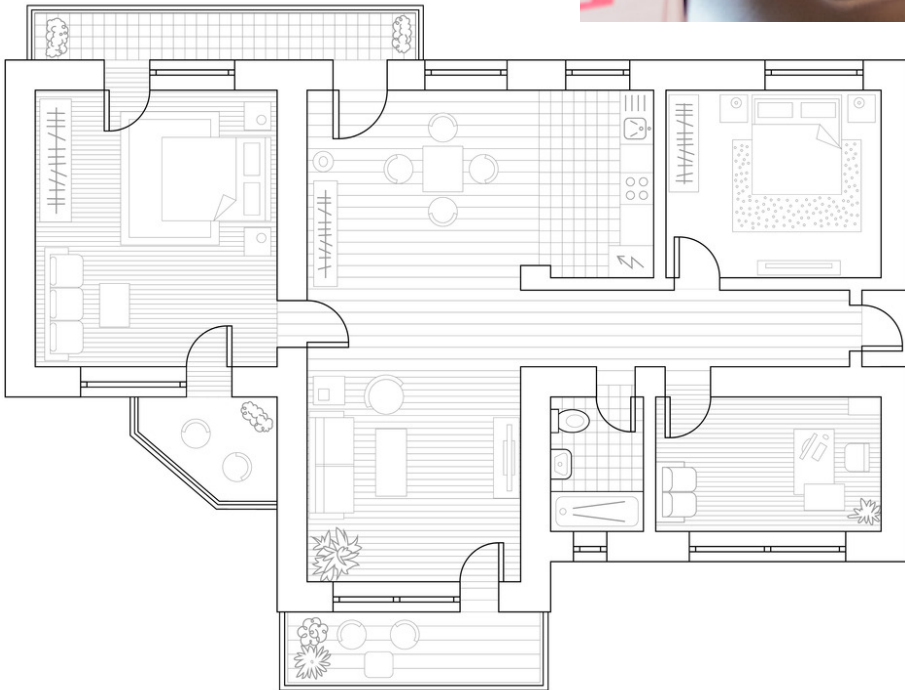
**Alana the Architect:
Architecture and Weather**

Meet Alana!



Hi! My name is Alana, and I'm an architect. I design buildings and structures, like bridges.

Why I Became an Architect

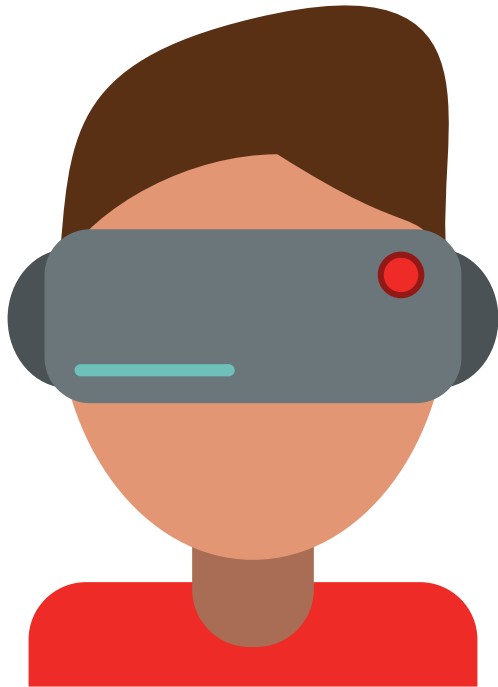


When I was a kid, I loved drawing. I learned that architects also love to draw! Architects draw blueprints. Blueprints are pictures that show what buildings or structures will look like. This blueprint is of a house!

Technology I Use at Work



I use a computer to design blueprints. I can then email the blueprints to other architects. It is important for architects to get feedback on their blueprints.



I also use VR glasses. VR glasses are special glasses that let you see images. VR means virtual reality. When you look into the glasses, you can see pictures of what houses will look like once they are built.

Learning about Severe Weather



Why do you think architects need to know about severe weather when they design buildings?

As an architect, I design buildings in places with severe weather. Severe weather is dangerous and can cause damage to buildings and property. Tornadoes and flooding are examples of severe weather.

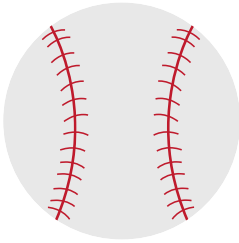
Learning about Severe Weather



Architects need to know about severe weather so they can decide what materials to use to design buildings. For example, if I am designing a house in a place where there is hail, I need to make sure the windows are strong. That way, the windows won't break when hail hits!

Did You Know?

Hail can be the size of a soft ball! Can you imagine softballs hitting the roof of your school or house?



A lot of materials can be used to build roofs in places there is hail. One example is slate. Slate is a type of rock. Slate is very durable, which means it won't get damaged if it is hit by hail.

