

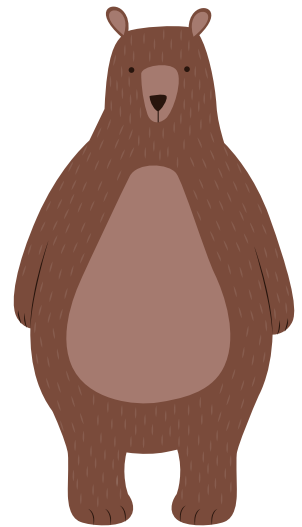


SCIENCE CAREER
ADVENTURES



Roderick the Park Ranger: Lighting Up A Cave

Meet Roderick!



Hey guys! I am Roderick. I am a park ranger. A park ranger is someone who protects parks. A park ranger makes sure that parks are clean and safe.

What I am Working On



Today, I want to go inside a cave in the park. I want to see what the cave looks like and if there are any animals there. The problem is that the cave is very dark! I cannot see anything in the cave!

Tools I Use To See In The Dark

To see in a dark cave, I need to find a way to create light. Here are some tools I use that create light.

Flashlight



A flashlight creates light in a dark cave.

Cell Phone



A cell phone has a bright screen. I hold it up to create light.

Tools I Use To See In The Dark

Here are a few more tools that I use to see in the dark.

Lantern



I hold a lantern when I go into a cave. The lantern makes a bright light so I can see.

Headlamp



I put a headlamp on my head. The headlamp has a light so I can see in a cave.

Dark and Light



This is what the cave looks like with no light. I cannot see in the cave!



This is what a cave looks like with light. I can see in this cave!

Make a list of things you could see inside a cave if you had light!

Take a Class Vote!



**What tool
would you
use to see
inside a
cave?**



Nocturnal Animals

Some animals are only awake at night. They are called nocturnal animals. Park rangers use flashlights and lanterns to see nocturnal animals in the dark.

Bat



Owl



Badger



Which nocturnal animal would you want to learn more about?