

Baby Plants and Parent Plants



Parent Tree



Baby Tree



Parent Sunflower

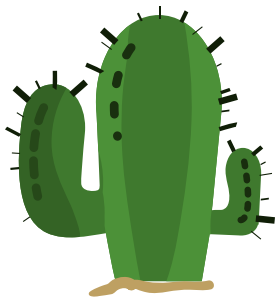


Baby Sunflower

Name: _____

Discovering a Plant

Step 1: Draw a picture of a parent plant that you have discovered. The plant can look like a plant you have seen before or it can look weird and different. Here are some examples:



Cactus



Tulip



Donut and Pizza Tree

Lesson: Differences Between Adult and Baby Plants

Step 2: Draw a picture of the baby plant. Your baby plant and parent plant should look similar to each other, but should also have some differences. Here is an example:



Parent Tulip



Baby Tulip

Step 3: Use art supplies to build your parent plant and baby plant.